

MEGA Product > MEGA Suite > Platform Tools

# MEGA Studio

With MEGA Studio, you can customize your MEGA Suite environment to suit the specific requirements and preferences of your enterprise.

## MEGA Studio Overview

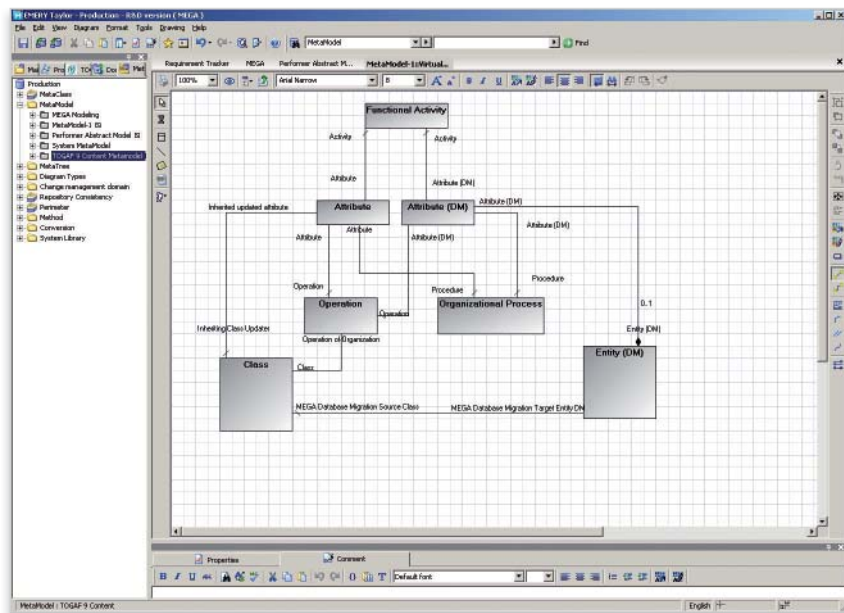
Every company is unique. Each has its own culture and its own best practices. With an activity as regimented as enterprise architecture, modeling benefits from the extensibility and flexibility needed to suit each enterprise.

MEGA Studio allows you to customize the MEGA Suite environment to be aligned with recognized industry methodologies, such as TOGAF and NAF, domain-specific requirements and graphical preferences. The modeling environment is adapted to the usage and requirements of your industry.

MEGA Studio provides powerful personalization possibilities in a graphical, intuitive format. A dedicated MEGA Studio navigator allows you to fine-tune multiple aspects of the tool, mainly metamodel concepts, navigation, object property pages, diagram types, modeling rules, and the graphical user interface. Diagrams and navigation trees help visualize your configuration.

## KEY POINTS

- Customize the MEGA Suite to fit your enterprise.
- Define metamodel concepts, including metaclasses, meta attributes and meta associations.
- Customize diagrams or create new ones.
- Modify the graphical user interface (GUI).
- Modeling rules to provide guidelines to the EA team.



## MEGA Studio > Features

MEGA Studio is built on the MEGA Suite repository and benefits from its robustness and scalability. Flexibility is an inherent service of this tool.

This product is part of the core MEGA Suite platform tools. This easy-to-use range of tools delivers adapted reporting, creates customized Web sites and documents, defines user profiles and access control, and allows for the import/export of data from different modeling environments.

MEGA Publisher, MEGA Supervisor, MEGA Exchange and MEGA Studio are all part of the MEGA Suite Utilities bundle.

### Metamodel Customization

- Create, read, update and delete metaclasses, meta associations, and meta attributes.
- Visualize the metamodel in a navigation tree.
- Define metamodels diagram with metaclasses, meta associations, and meta attributes.
- Configure the behavior of linked objects with respect to operators (duplication, extraction, comparison, deletion, variation).

### Diagram Customization

- Create, read, update and delete diagram types.
- Create/delete metaclasses/meta associations available within diagram types.
- Define default graphical display for metaclasses.
- Define default graphical display for meta associations (color, line style) in a diagram type.
- Document the diagram type with contextual help.
- Associate diagram types with metaclasses.

### Graphical User Interface Customization

- Configure navigation trees.
- Configure property pages for objects by creating new tabs, read-only or read/write attributes, or macros for calculating attributes.
- Specify icons to represent objects in the navigation tree.
- Specify shapes to represent objects in a diagram type.
- Create and modify shapes with a shape editor.
- Create new menus.
- Create wizard to guide the modeling process.

### Modeling Rule Customizations

- Create a regulation (a set of rules) to associate with a metaclass or diagram.
- Define modeling rules with compliance levels (recommendation, requirement).
- Specify tests to verify compliance with rules and regulations.



## MEGA Suite

The MEGA Suite is comprised of four categories of products: modeling tools, control tools, transformation tools and communication tools.

The platform tools support project customization ranging from user profile definition to adapted reporting to data integration from different modeling environments. The MEGA Suite is modular, so each tool may be used independently or combined with other tools, depending on your project context. All products are based on a common repository and share the same platform services. The MEGA Suite also supports standard libraries and frameworks.



Insight. Collaboration. Value.

[www.mega.com](http://www.mega.com)

